

HUBERT[®] Film Wrapper Technical Bulletin

Worldwide Excellence in Food Merchandising

Hubert #53232
U.L. Listed

9555 Dry Fork Rd., Harrison, OH 45030-1994 • 1-800-543-7374 • www.hubert.com



DIRECTORY

General and Safety Information	2
Technical Specifications	3
Operation	4
Film Roll Axle Assembly	4
Loading the Film Core Axle	5
Electrical Schematics	5
Testing	6
Troubleshooting	7
Maintenance	7
Parts Reference List	8

GENERAL INFORMATION

The Hubert Company is not responsible for any harm or injury caused due to any person's improper or negligent use of this equipment. The product shall only be operated by someone over the age of 18, of sound mind, and not under the influence of any drugs or alcohol, who has been trained in the correct operation of this machine, and is wearing authorized, proper safety clothing. Any modification to the machine may cause harm to individuals using the machine or in the vicinity of the machine while in operation.

SAVE THESE INSTRUCTIONS.

SAFETY INFORMATION

When using electrical appliances, safety precautions should always be followed including:

1. Read all instructions before using this wrapping machine.
2. To protect against risk of electrical shock, do not put the cord, plug, or base in water or any other liquid.
3. Supervision is necessary when the appliance is in use or near children.
4. The machine must be put on a stable, flat working area.
5. Unplug the machine from the outlet when not in use. Unplug the machine before assembly or disassembly and before cleaning or maintenance.
6. Do not touch moving parts.
7. Don't operate the appliance if there is a damaged cord or plug. If the appliance malfunctions, or is dropped or damaged in any manner, turn off the machine immediately and unplug it from the socket. Call our toll-free customer service number at 1-800-543-7374 for information on examination, electrical repair, mechanical repair, or adjustment.
8. Do not immerse in water. Don't use outdoors.
9. Don't let cord hang over edges of a table or counter. Do not let the machine touch hot surfaces.
10. Keep hands and clothing away from the hot plate and heated cut-off rod.
11. Don't use the switch or power plug with wet hands or clothing.
12. Don't have combustible substances around the equipment.
13. Ensure the proper connection of the grounding wire.
14. When finished using the machine, unplug the machine but never by pulling on the cord.
15. COMMERCIAL USE ONLY.
16. WARNING: To reduce the risk of electrical shock and injury, disconnect from power supply before fuse replacement.

CAUTION:

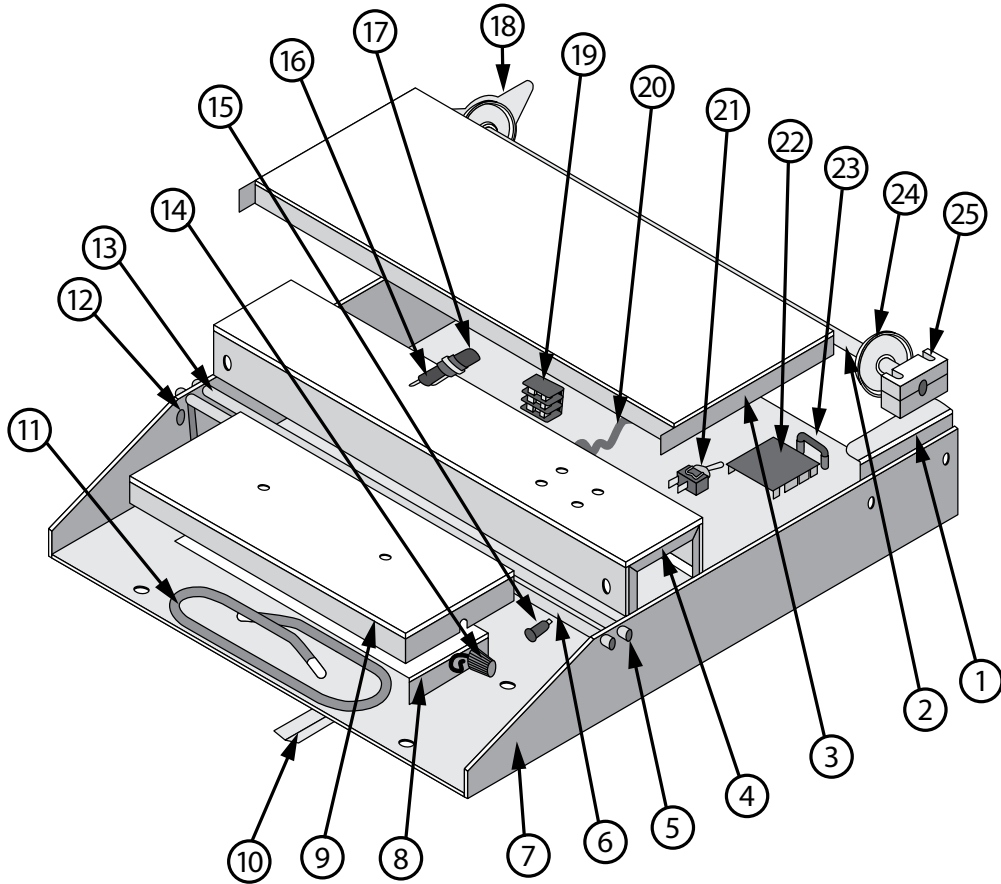
- Hot surface. Avoid contact.
- To provide continued protection against risk of electric shock, connect to properly grounded outlets only.

HUBERT[®] Technical Specifications

Worldwide Excellence in Food Merchandising

Hubert #53232
U.L. Listed

9555 Dry Fork Rd., Harrison, OH 45030-1994 • 1-800-543-7374 • www.hubert.com



1. Brace
2. Film Core Axle
3. Cover Plate
4. Ledge
5. Cap
6. Heated Cut-Off Rod
7. Base
8. Element Plate
9. Hot Plate
10. Strip
11. Heat Element
12. Clip
13. Film Retainer Rod
14. Thermostat
15. Light
16. Fuse
17. Fuseholder
18. Core Adaptor
19. Terminal Blocks
20. Power Cord
21. Main Switch
22. Circuit Control Board
23. Circuit
24. Core Adaptor
25. Bearing Block

Type	Wrapping Machine Single Roll
Stretch Film	18" Maximum Width
Hot Plate	15 ³ / ₁₆ " x 6 ¹ / ₂ "
Electrical	115 Volts 750 Watts 60 Hz 7 Amps
Weight	30 lbs.
Dimensions (DWH)	26" x 22 ¹ / ₂ " x 9"
Max Temperature	330°F
Heated Cut-off Rod	100 Watts

9555 Dry Fork Rd., Harrison, OH 45030-1994 • 1-800-543-7374 • www.hubert.com

The wrapper is appropriate for fruit, vegetable, fish, meat, cold food, etc. First, insert the electrical plug into a standard NEMA 5 -15 outlet and switch on. A red light will appear. Turn the thermostat to set the desired temperature. Before starting the operation, let the machine preheat for 5 to 10 minutes. This can be done by leaving the temperature setting on the desired temperature. Put the wrapping material in place. Next, open up the cover plate. The wrapping material is then placed between the cover plate and bar. Adjust the tightness of the plastic wrap. Then put the food on cover plate and pull out the wrapping material. After finished wrapping the food, cut-off the wrapping with the heated cut-off rod equipped with the machine. Put the wrapped food on hot plate for a few seconds. If only using the heated cut-off rod and not wrapping any food, please turn thermostat to Min. "LO".

Dispensing Mechanism: Axle

The film dispensing mechanism is the axle. Model accepts film roll widths up to 18" W x 8" D. Contact your film supplier for application information regarding film thickness and color.

Heated Cut-off Rod

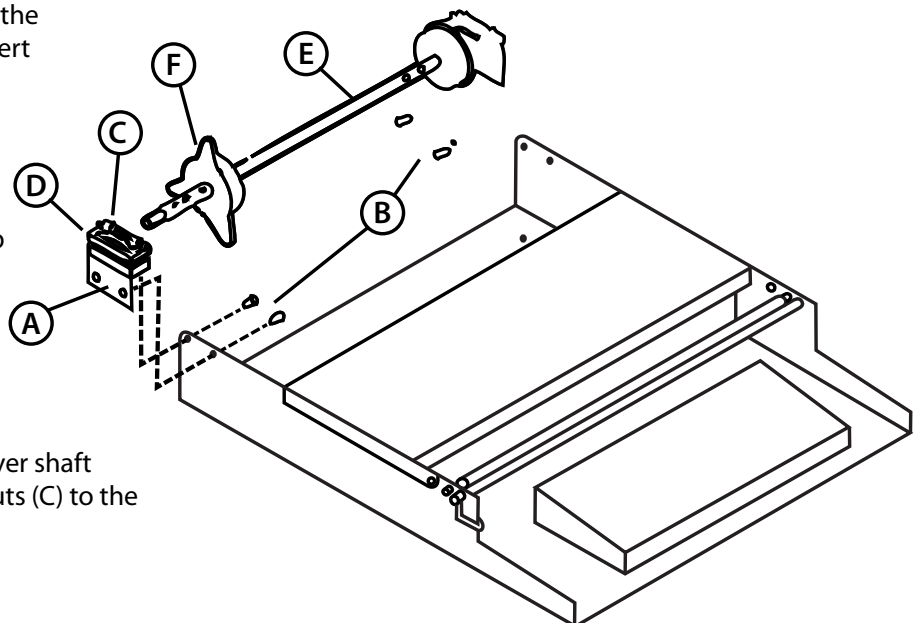
The heated cut-off Rod cuts the desired length of film. The temperature is factory preset at 266°F +/-50°F and monitored and controlled electronically by a printed circuit board mounted inside the electronic box. It is field adjustable by an electrical technician.

Hot Plate Sealing

The hot plate is a 15 3/16" x 6 1/2" aluminum casting with a built-in heating element. The operator seals the ends of the film on the Hot Plate. The thermostat mounted under the hot plate is adjusted by a plastic knob mounted on the right side of the hot plate. Adjustment ranges from "off" to 330°F. Temperature setting is determined by film thickness, air temperature (kitchen or cooler) and operator's speed.

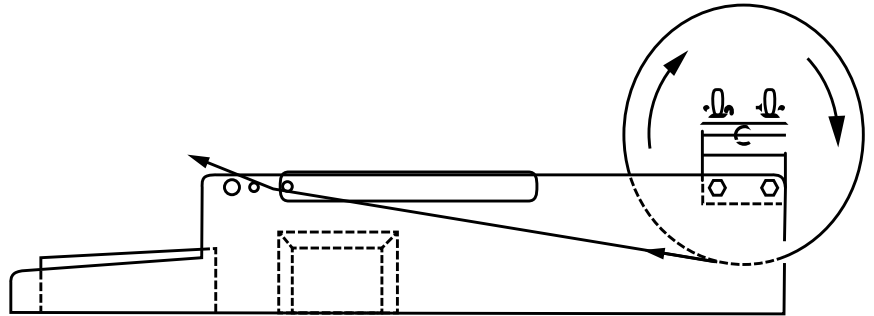
FILM ROLL AXLE ASSEMBLY INSTRUCTIONS

1. Install Bearing Block Assembly (A) on the left side of Base, line up holes and insert Carriage Bolts (B) and tighten.
2. Repeat step (1) on right side of Base.
3. Loosen all Wing Nuts (C) on Bearing Blocks on both sides to loosen top of Bearing Blocks, and then rotate top to expose Film Roll Axle Slots.
4. Install Film on Film Roll Axle (E), tighten Core Adapter Wing Nut (F), and insert in slots in the bottom of the Bearing Blocks.
5. Rotate the top of Bearing Block to cover shaft of Film Roll Axle, and tighten Wing Nuts (C) to the required tension.

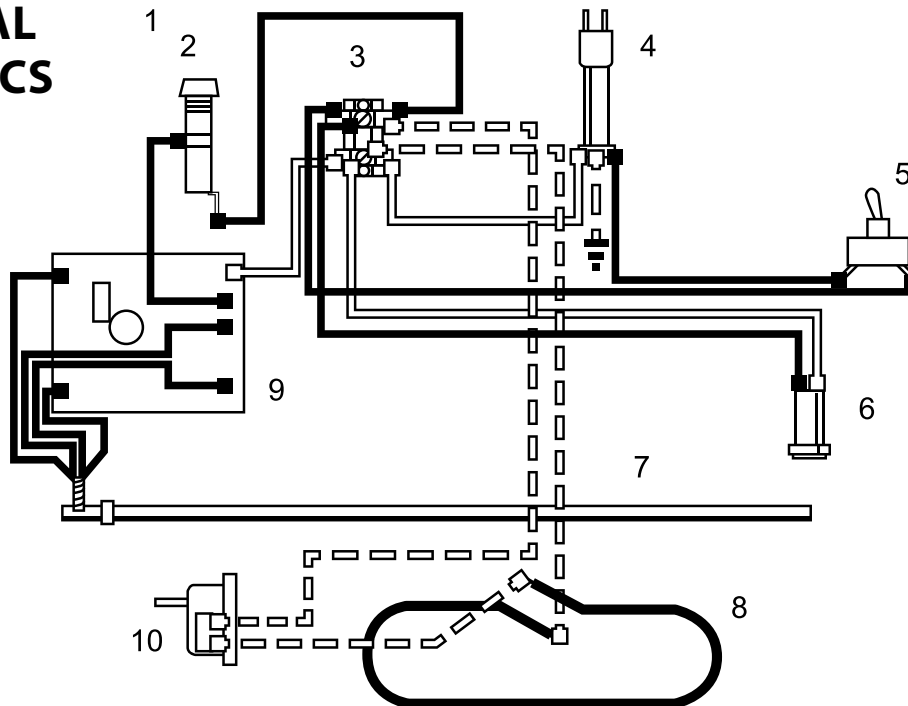


LOADING THE FILM CORE AXLE:

1. Loosen all Wing Nuts. Swing out right and left Bearing Blocks.
2. Lift out the Axle Assembly. Unscrew Wing End Cap, position Pin End Cap for correct film width, secure with Pin and O-Ring.
3. Position the cardboard core of the Film Roll against the taper of the Pin End Cap. Make certain that the film will dispense from the bottom of the roll.
4. Replace Wing End Cap and Screw tightly.
5. Replace Axle and Film onto the Lower Bearing Blocks. Swing Upper Bearing Blocks back into place. Tighten and adjust Wing Nuts for desired film tension.



ELECTRICAL SCHEMATICS



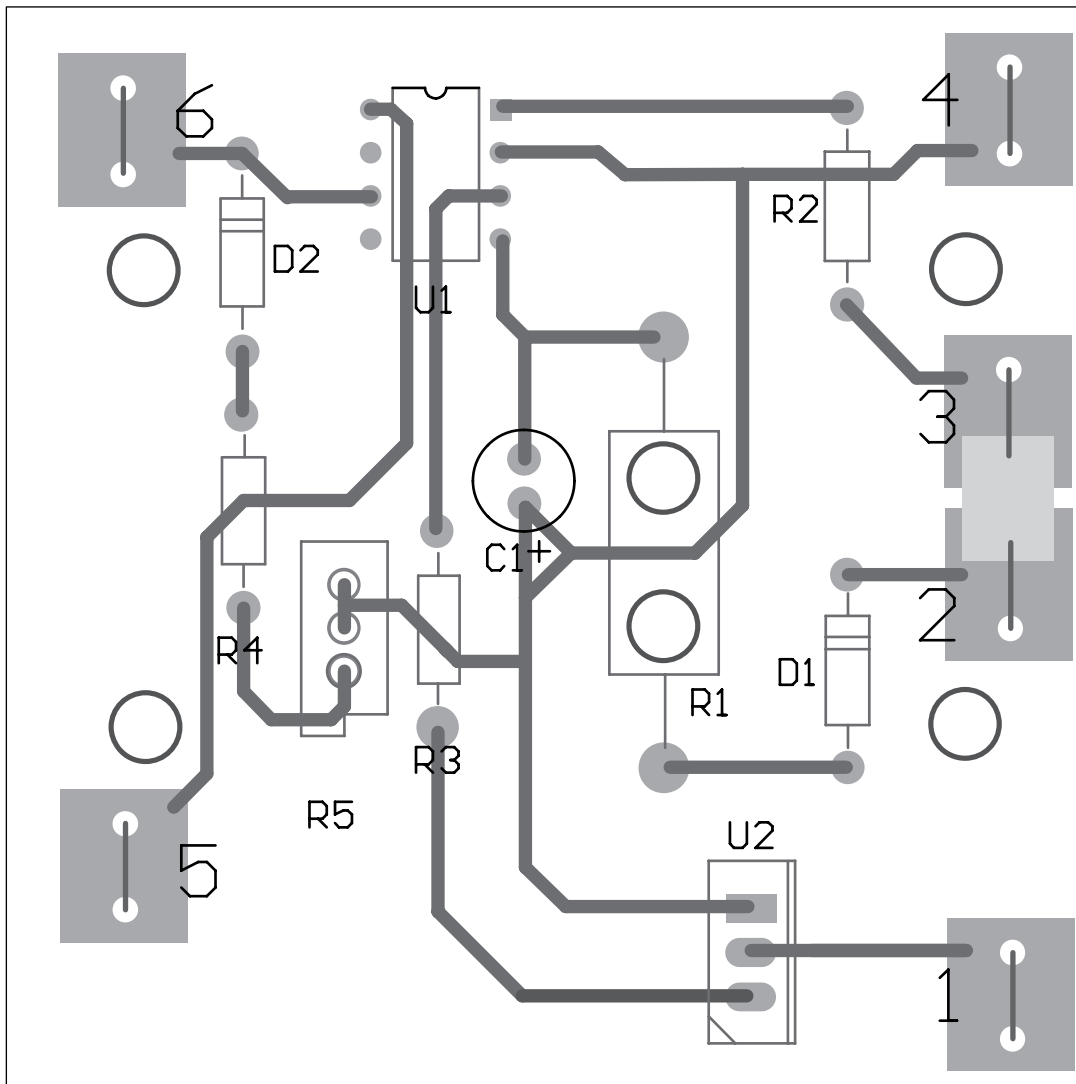
No.	Stock No.	Description	No.	Stock No.	Description
1	77102	Fuse Holder	6	23847	Light
2	72333	Fuse	7	81581	23" Heated Cut-Off Rod
3	—	Terminal Block	8	17109	Heat Element
4	—	Power Cable	9	86857	Circuit Board
5	41059	Toggle Switch	10	93234	Thermostat

Testing the Cut-Off Rod:

1. Disconnect the "red" CUT-OFF ROD wire from terminals 1 and 2.
2. Using an ohmmeter, measure the resistance across "red" terminal wires.
3. Disconnect "black" sensor wires from terminals 5 and 6. If the reading across "black" sensor wires is over 1M Ohms or if there is no reading -replace Cut-Off Rod.

Testing the Circuit Board:

1. Disconnect rod wires from Circuit Board. (Terminals 1, 2, 5 and 6).
2. Using D.C. voltmeter and with the switch "on": the reading across "black" sensor terminals should be 6.5 VDC. If it is less, replace Circuit Board.
3. Reconnect "black" wires to board. Reading should be 3 VDC. If less than 3 VDC- replace Circuit Board.



TROUBLESHOOTING

Apparent Problem	Check Point	Solution
Cut-off rod fails to heat properly	The cut-off rod and circuit board must be tested together. Use procedure described herein. Check Fuse.	Replace if necessary
Cut-off rod temperature is too high or too low	Rheostat knob on the printed circuit board (see circuit board on page 6, Rheostat = R5 knob) can be adjusted by an electrical technician. Note: rheostat is fragile. Turn clockwise to increase heat and to decrease resistance of R5. Turn counterclockwise to decrease heat and increase resistance of R5.	Replace if necessary
Hot plate fails to heat or overheats	Visually inspect the wire and connections under the hot plate for burning and replace if burnt. Visually inspect the lead on the heating element for burning and replace if burnt.	If burning or short circuiting does not show, replace the thermostat. If burnt replace element.

MAINTENANCE

Cleaning and Service:

- Unplug unit before any maintenance or cleaning.
- When dirt is stuck on the nested cut-off rod and hot plate, clean with a cotton cloth. Don't use metal or sharp objects. Don't immerse equipment in water or spray water directly on the unit. Do not perform any actions which could be dangerous for the operator or those around the machine.
- When working: if light is not working or heated cut-off rod and hot plate is not heating, turn off power, check the power cord. If it is still not working, contact a qualified technician.
- The equipment must be serviced by trained technicians.
- If fuse is not the correct setting, change to a 1 Amp fuse.

WARNING:

- For protection against fire or electric shock, replace with type 6D and 1 Amp fuse.

CAUTION:

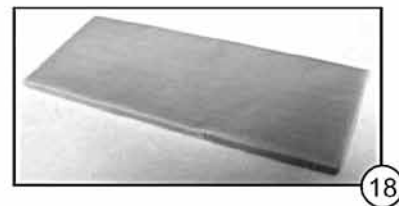
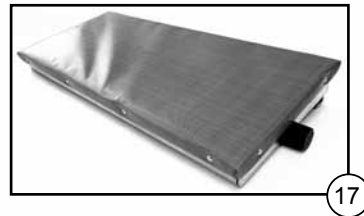
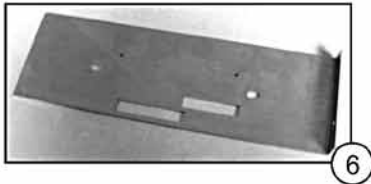
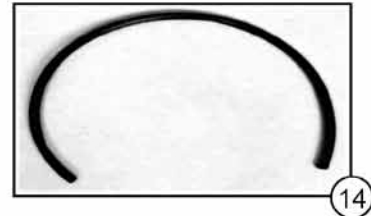
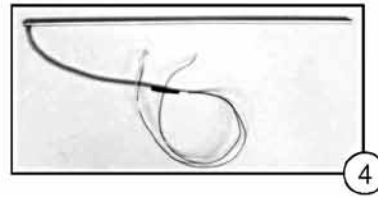
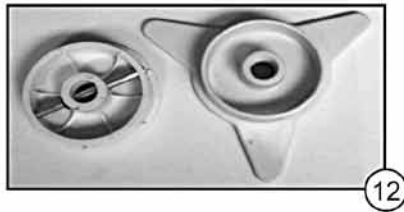
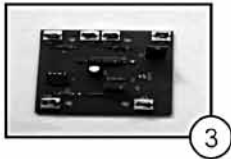
- This product has more than one power-supply connection point. Disconnect all power before servicing.

HUBERT® Parts Reference List

Worldwide Excellence in Food Merchandising

Hubert #53232
U.L. Listed

9555 Dry Fork Rd., Harrison, OH 45030-1994 • 1-800-543-7374 • www.hubert.com



No.	Stock No.	Description	No.	Stock No.	Description
1	73233	6D 1 Amp AGC Fuse	10	23847	Pilot Light Red
2	77102	Fuse Holder	11	32011	Film Core Axle
3	86857	Circuit Control Board	12	83842	Core Adaptor Set
4	81581	23" Heated Cut-off Rod	13	16761	Bearing Block Set
5	17109	Heat Element	14	92004	Vinyl Film Retainer
6	22944	Element Plate	15	24593	Film Retainer Rod
7	93234	B200 Thermostat	16	91019	Seal Plate Harness Kit
8	38334	Thermostat Knob	17	10675	15 3/16" x 6 1/2" Hot Plate Kit
9	41059	Toggle Switch	18	89418	15 3/16" x 6 1/2" Teflon Cover